

A I R   D I S T R I B U T I O N  
**PRODUCTS**

PRODUCT:

Nexus Operating Room Suite

**NEUS**

**NEXUS  
OR SUITE**

CONNECTING AIR & LIGHT IN  
CRITICAL ENVIRONMENTS

F O C U S

**07**



ADVANCING THE SCIENCE OF AIR DISTRIBUTION

Rethink what air management systems can be.  
Revise your notion of functionality.  
Redefine your comfort zone.<sup>TM</sup>



## Comfort, Redefined.

---

Since 1946, Titus has focused on technologically advanced products that create the highest degree of comfort.

We've consistently led the industry by breaking the barriers of expectation and convention when it comes to technology. We've redefined how technology drives, influences and supports air management. And by being first to market with the most innovative approaches to air distribution, we're proud to say that the marketplace has taken notice, and is counting on us to lead the way into the next decade. A challenge we're more than happy to accommodate.

Titus has raised the bar on design, proving that functional can also be beautiful. And we've redefined what it means to be energy efficient, with a collection of smart technology products that optimize the use of natural resources.

Titus has also redefined what it means to work with an air management products partner. We pride ourselves on listening and responding so that we can not only meet expectations, but also exceed them. Service has been, and will always be, our main focus at Titus. And, it's why so many of our customers keep coming back.

**Welcome to your new comfort zone. It starts here.**

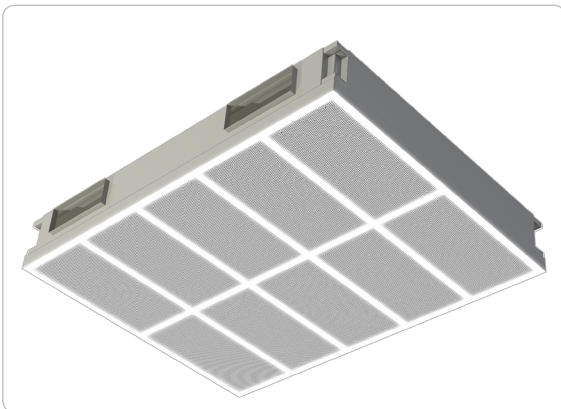
## An Integrated Air Distribution and Lighting System

The word Nexus refers to a connection or series of connections linking two or more things. The Nexus OR Suite connects air, light, and more, to deliver clean air and quality lighting, while maximizing space and performance in operating rooms. This customizable system utilizes a common, low-profile plenum to allow quick and easy installation in new construction or retrofit applications. The Nexus OR Suite also helps to comply with ASHRAE 170 - Ventilation in Health Care Facilities.

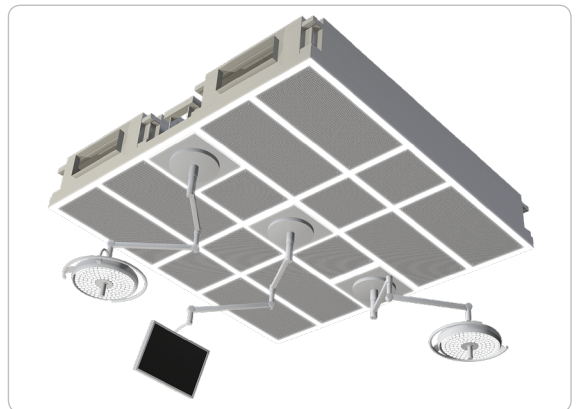


## Available in Standard or Heavy-Duty Models

The Nexus OR Suite is available in two customizable models, a standard and heavier-duty model that can accommodate a wide range of suspended equipment including all necessary lighting and booms. The heavier-duty model is referred to as the Nexus OR Suite-S, and stamped, structural calculations are provided with each configuration.



Standard Nexus OR Suite



Heavy-Duty Nexus OR Suite-S



## Maximize Ceiling and Room Space

Operating rooms have become more complex with advancements in technology and the continuous desire to enhance patient care. As a result, the amount of surgical and communication equipment has expanded. To free up room space, ceiling-mounted equipment has become crucial in today's designs. The Nexus OR Suite has been specifically designed to make the best use of the limited ceiling space by integrating LED lighting within laminar airflow diffusers.



Operating Room Ceiling

## Reduce Installation Time

The pre-engineered, modular design is ideal for retrofit projects, as the system offers fast and quiet installation with minimal disruption to surrounding areas. This leads to a functioning operating room in much less time.

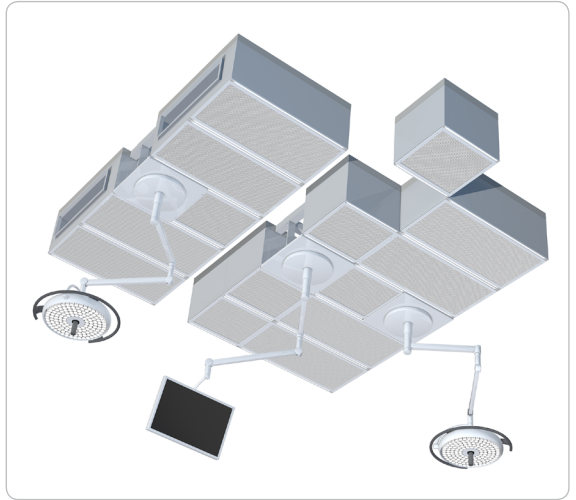
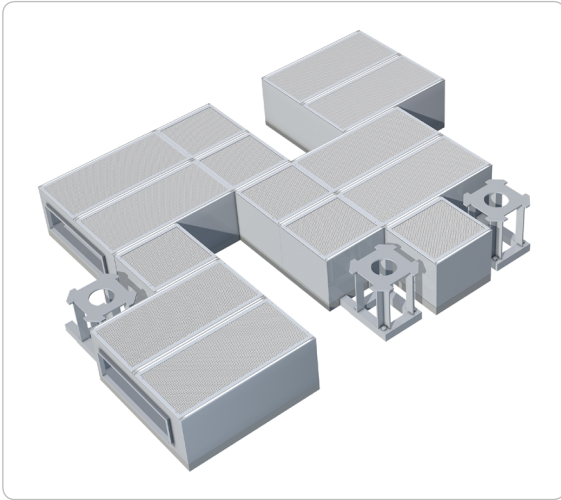
All prefabricated components ship in factory-assembled sections to minimize installation time which can drastically reduce a typical design/build project schedule and cost. The sections fit easily in standard elevators and through standard doors. The modular design not only simplifies retrofits, but also new construction projects.



A functioning operating room in less time

## Customize Equipment Layout

The Nexus OR Suite allows for a fully customized design with virtually unlimited layout options, using combinations of airflow diffusers, gel-seal HEPA filters, and LED lights. With this design flexibility, the system can be designed to meet your exact specifications.



## Provide Clean Air

The air filtration and distribution system can include any combination of laminar flow diffusers, in any size or configuration. Air diffusers utilize laminar flow technology to produce a smooth air path with a constant velocity and pressure. This uniform air distribution blankets the operating table and isolates and protects the patient from any contaminated air. The patient is further protected by the Nexus OR Suite's anti-microbial white finish.

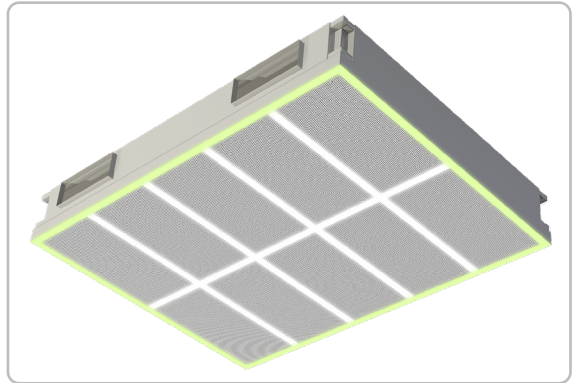
Each diffuser can be ordered with or without a gel seal HEPA or ULPA filter, and with or without perimeter LED lights which are isolated from the air stream.



Laminar Flow Air Diffuser

## Improve Visibility

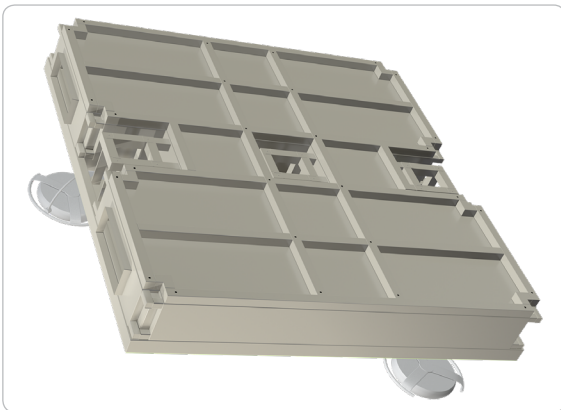
In addition to providing the highest air quality, the Nexus OR Suite elevates lighting quality with direct, high-output, high-efficiency LED light strips that do not interfere with the air stream. This OR-Grade Lighting is tunable and dimmable and can be either CRI (Color Rendering Index) or R9, with values up to 97, with wall-mounted touchscreen lighting control. Green lighting that provides surgical contrast is also available and can be applied around the system's perimeter.



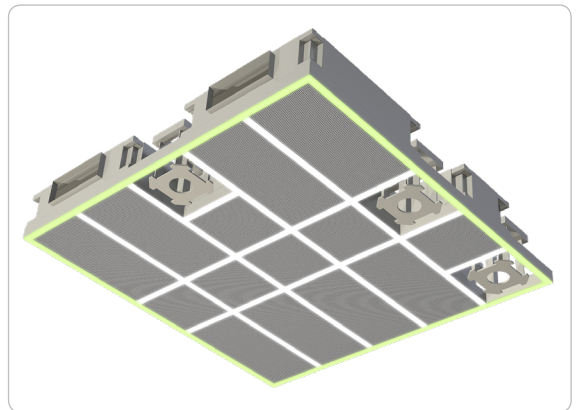
Green lighting for surgical contrast

## Mount Heavier Surgical Equipment and Booms (Nexus OR Suite-S Model)

The Nexus OR Suite-S model provides structural, load-bearing support for hanging heavy equipment, and can accommodate boom mounts that can be placed in any location for lights and other equipment. Its heavy-duty tubular steel frame anchors all components and attaches to the building structure. This complete system is provided with stamped structural engineering calculations.



Top-View: Heavy-duty steel frame



Boom mounts for heavy lighting and other equipment

## High Quality That Meets Regulatory Guidelines

This ceiling system offers the added benefit of being manufactured in a quality-controlled environment, where every step is carefully monitored and performed by skilled technicians. In addition, the Nexus OR Suite helps comply with ASHRAE Standard 170's guidelines for surgery room airflow and coverage area. This standard defines ventilation system design requirements that provide environmental control in health care facilities.



NE  US

## NEXUS OR SUITE

CONNECTING AIR & LIGHT IN  
CRITICAL ENVIRONMENTS

605 Shiloh Rd.  
Plano, Texas 75074  
(ofc): 972.212.4800  
(fax): 972.212.4884  
(web): [www.titus-hvac.com](http://www.titus-hvac.com)